

Robinson+Cole

Manufacturing Law Group

ROUNDTABLE DISCUSSION

OCTOBER 6, 2016



Please Note

This roundtable is designed to provide accurate information about the subject matter. However, it only provides general information and does not constitute legal advice. No attorney-client relationship has been created. If legal advice or other assistance is required, let us know directly.

Preliminary Considerations

- This platform should not be used for activities prohibited by antitrust law.
- Avoid discussions leading to a restriction, or coordination, of competition between or among attendees.
- Attendees should not share information, have discussions and/or make arrangements on, among other things, pricing, market conduct, terms of sale, individual manufacturing costs and costs of sale, output, or supplier or customer relations/allocation.

Incident Management and Response



Kevin Lenehan
Senior Counsel-Litigation
Sikorsky

INCIDENT RESPONSE

Get out the Checklist

Notification:

SIREN

Operators

Media

Regulators

Response:

Chain of Command

A&PS

Program



IMMEDIATE ACTIONS

Lots to do

Incidents:

Coordinate Comms

Secure Records

Identify Custodians

Contact Counsel

Issue Holds

Investigation

GOOSE & GRIMM • Mike Peters

edia Services, Inc.



CONTINUING RESPONSIBILITIES

The Daily Grind

Advice and Counsel
A&PS
Programs
Communications
Investigation
NTSB
Internal
Privilege Issues





Rogers Corporation's Global Legal & Compliance Support Model

Ben Buckley
Associate General Counsel &
Director of Compliance & Integrity



Helping **power, protect, connect** our world™

Rogers at a Glance

Global leaders in engineered materials
helping **power, protect, connect** our world



Ticker

NYSE ROG

Heritage

Est. 1832; 184 years of
operations

Employees

2,800 employees worldwide

Global Scale

Headquarters in Rogers, CT and
Chandler, AZ

6 Countries

21 Manufacturing facilities

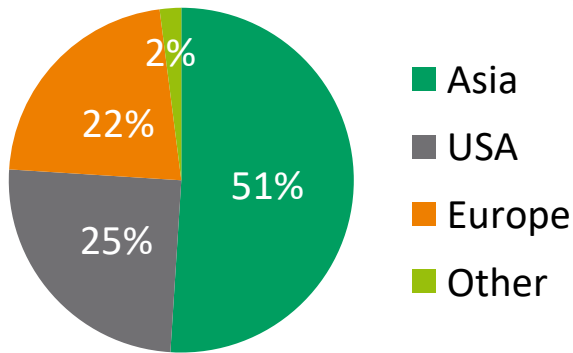
Market Cap

1.07 Billion

Global Operations & Sales



2015 Sales by Region



75% of sales outside the US, serving regional customers manufacturing for global markets

3 Strategic Business Segments



Advanced
Connectivity
Solutions (ACS)



Elastomeric
Material Solutions
(EMS)



Power Electronics
Solutions
(PES)

- High performance materials
- Mission-critical applications
- Technology innovation leadership
- Strong, collaborative customer relationships

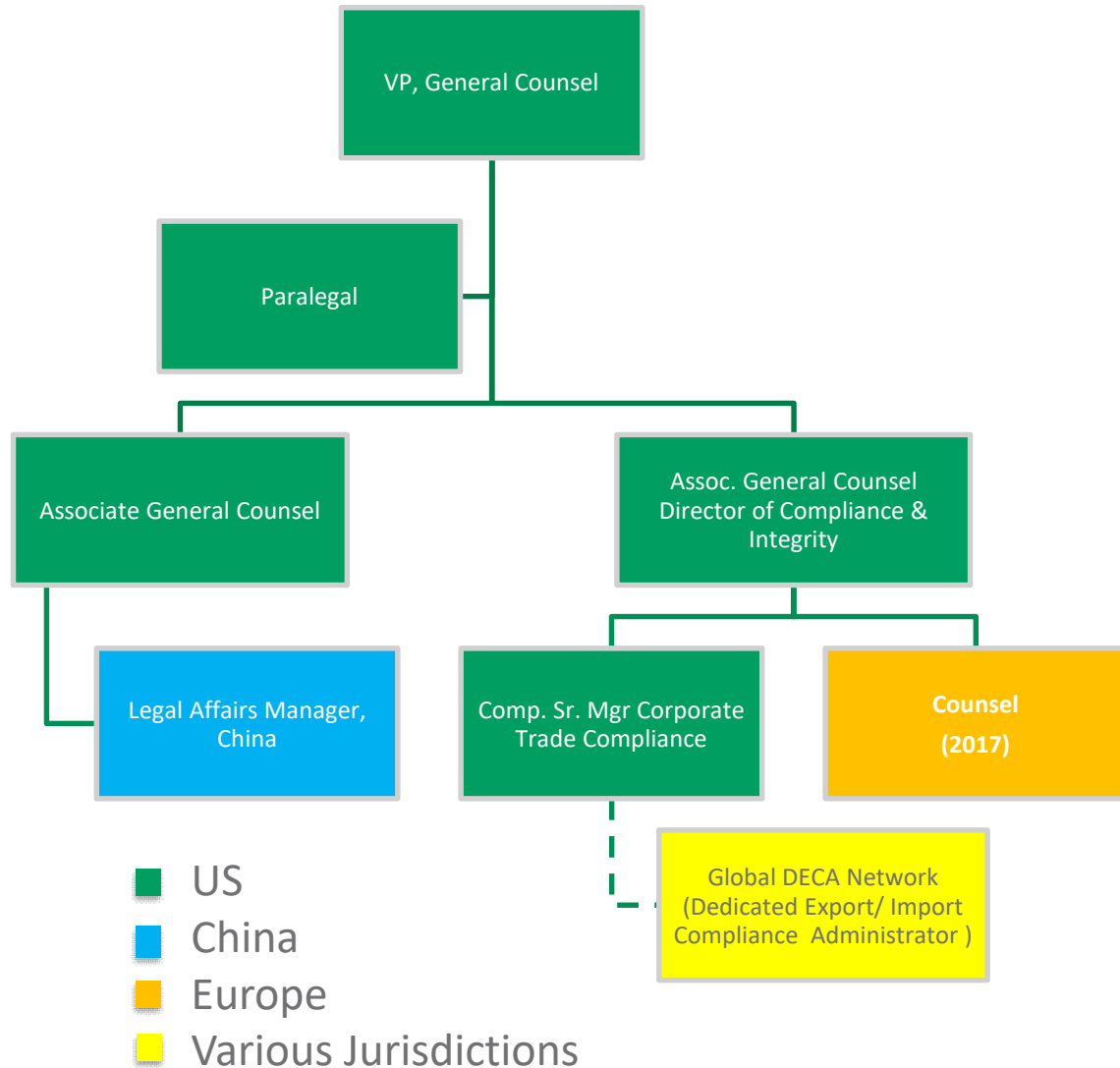
Focused on unique engineered materials solutions

Rogers Legal & Compliance Department

Global Legal Footprint

Leverage Internal Subject Matter Expertise First

Use of Outside Counsel for Gap-Filling/Local Expertise and Overflow



Questions?



Helping **power, protect, connect** our world™

TEXTRON

Legal Counsel & the Multinational Conglomerate

Fletcher C. Thomson
Interim VP & General Counsel
Kautex Textron GmbH & Co. KG

Textron Segments

Textron Aviation

36%



Cessna Aircraft
Beechcraft
Hawker

Bell Helicopter

26%



Bell Helicopter

Textron Systems

11%



Textron Systems
Lycoming
TRU Simulation +
Training

Industrial

26%



Textron
Specialized
Vehicles
Textron Tools &
Test
Jacobsen
Kautex

Finance

1%



Textron Financial

2015 Revenue \$13.4B

TEXTRON

Primary Industries

Aviation



Defense



Industrial

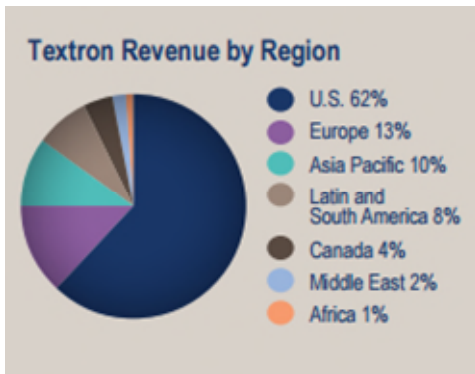
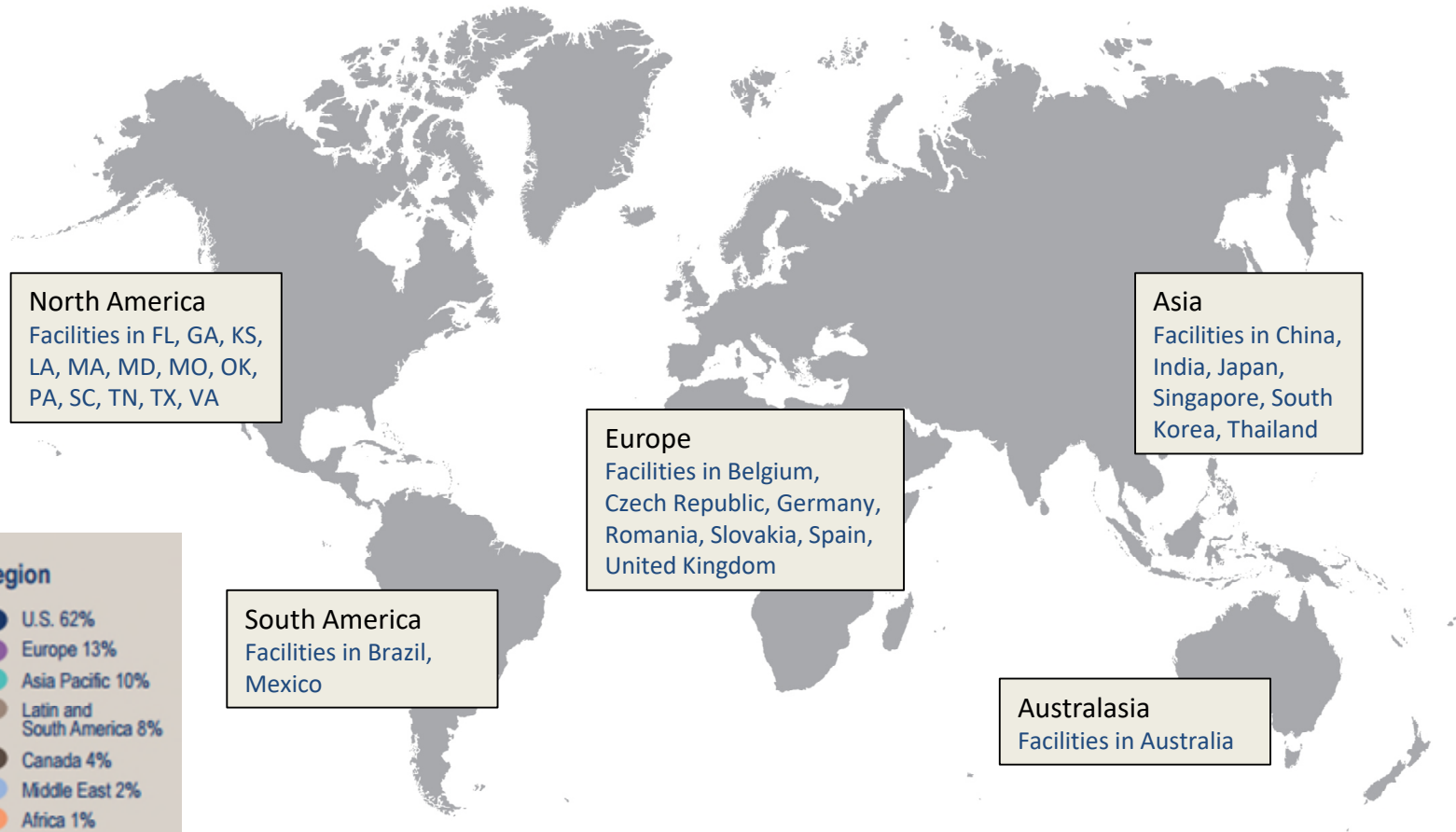


Finance



TEXTRON FINANCIAL™

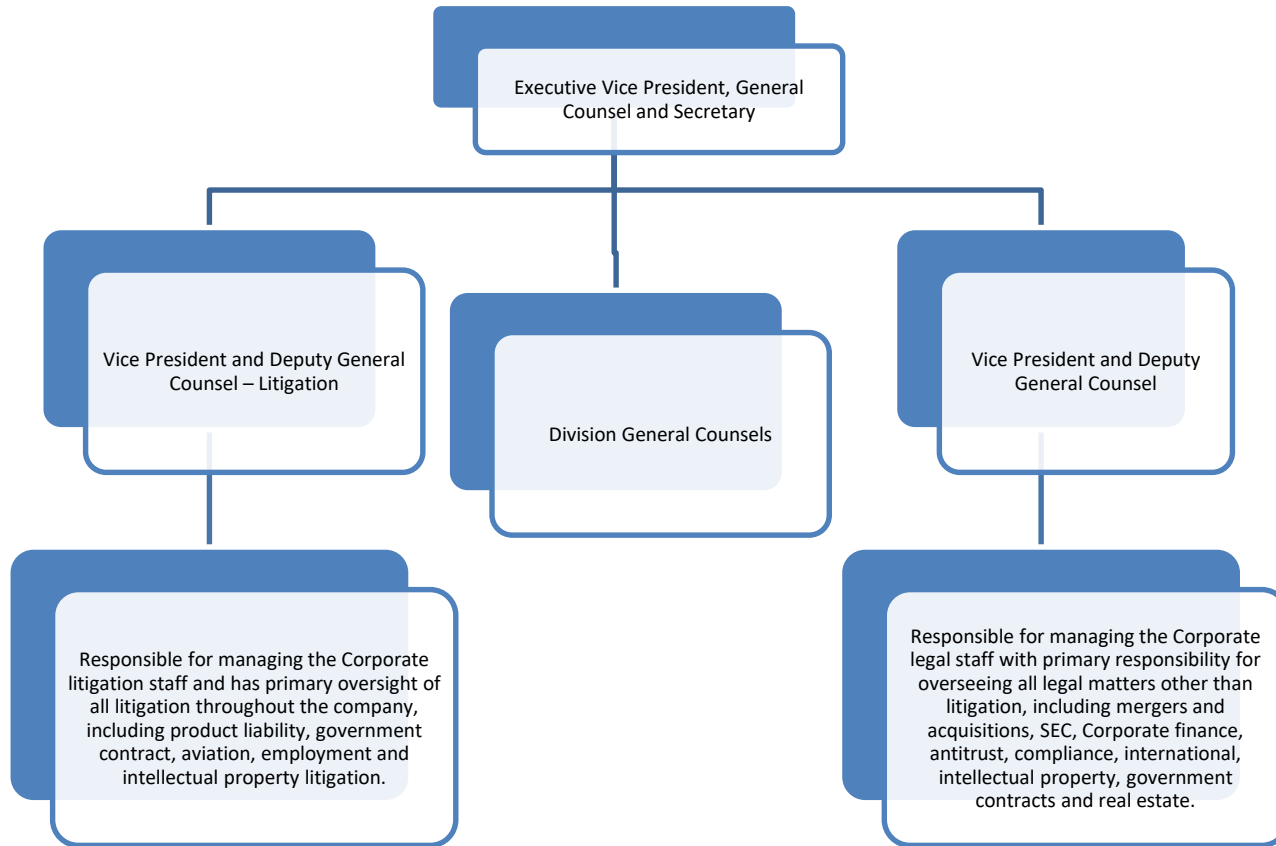
Textron Global Reach



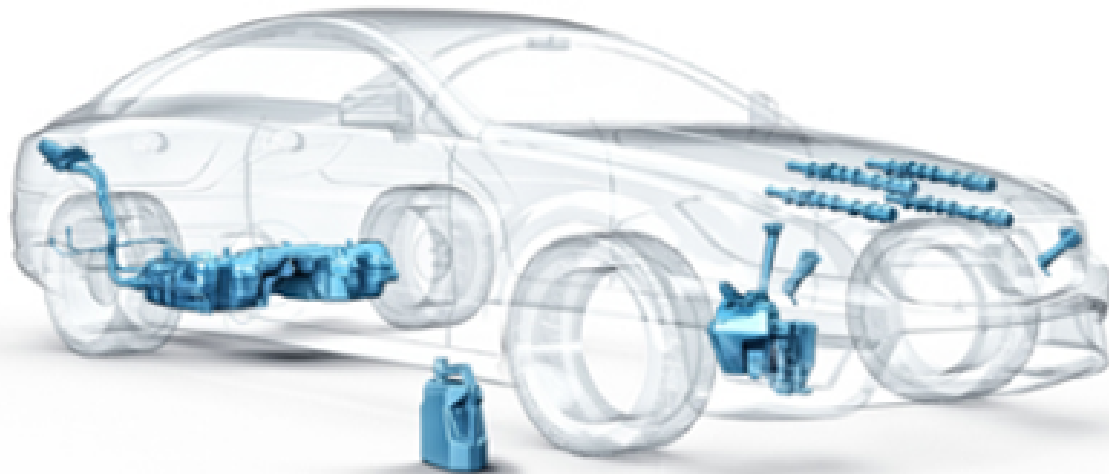
Source: Textron 2015 Fact Book

**Worldwide presence supported by 35,000 people
in more than 25 countries**

Textron Legal Department



Source: Textron.com



Kautex - a division of Textron (TXT) - is headquartered in Bonn, Germany, and rated among the TOP 100 Automotive Suppliers worldwide. Kautex is a leading global supplier of plastic fuel systems, selective catalytic reduction systems (SCR) and clear vision systems and sensor cleaning solutions. Furthermore, the company produces and supplies camshafts and industrial packaging. Kautex operates in 17 countries with 6,500 employees.

*Source: Textron 2015 Annual Report

Bell Helicopter®

EZGO®

TEXTRON FINANCIAL

JACOBSEN

LYCOMING

TEXTRON Systems

GREENLEE

Cessna

KAUTEX

CUSHMAN

BAD BOY
OFF ROAD

SR SHERMAN+REILLY®

DIXIE CHOPPER

Beechcraft

Hawker

TRU SIMULATION
+ TRAINING

TUG

TEXTRON